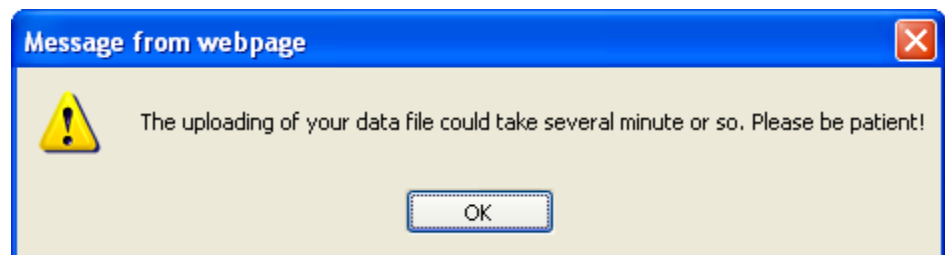


Instructions to upload a file to the MUMS Support Team

- Go to www.MUMS2000.com
- Click on the link: [Upload your MUMS/2000 Backup File to Support](#)
- Fill out the form:

YOUR UNION:	<input type="text"/>
YOUR LOCAL:	<input type="text"/>
YOUR NAME:	<input type="text"/>
YOUR PHONE NUMBER:	<input type="text"/>
YOUR EMAIL ADDRESS:	<input type="text"/>
SELECT MUMS/2000 BACKUP ZIP FILE:	<input type="text"/> <input type="button" value="Browse..."/>
<input type="button" value="Upload File"/> <input type="button" value="Reset"/>	

- OK the message



- Wait for it to complete.

THANK YOU. YOUR FILE HAS BEEN UPLOADED AND SUPPORT HAS BEEN NOTIFIED.

[Home Page](#)